

RFQ-0129

Design Build Finance Operate Maintain Services for the INGLEWOOD TRANSIT CONNECTOR PROJECT



Project Outreach Event

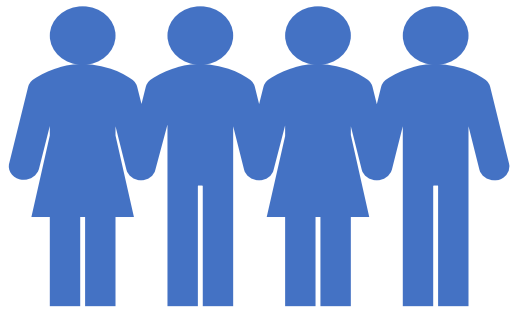
October, 2022



Agenda

Introduce Ourselves
Team Overview
Project Overview
DBE Opportunities
Questions/Answers
Networking

Supportive Services



Thank you



THE proudbird
food bazaar & events center



Presenting

Equity Members

Vanessa Sarmiento ACS
Project Manager

Jeremy Ebie Phoenix
Infrastructure Group
Founder & CEO

Design/Construction/O&M

Carlos Tarazaga AZTEC
Senior Vice President

Jon Kron Dragados
Senior Bid Manager

Dean Hurst Doppelmayr
General Manager

Orville Riley Doppelmayr
O&M Manager

Equity, Diversity & Inclusion

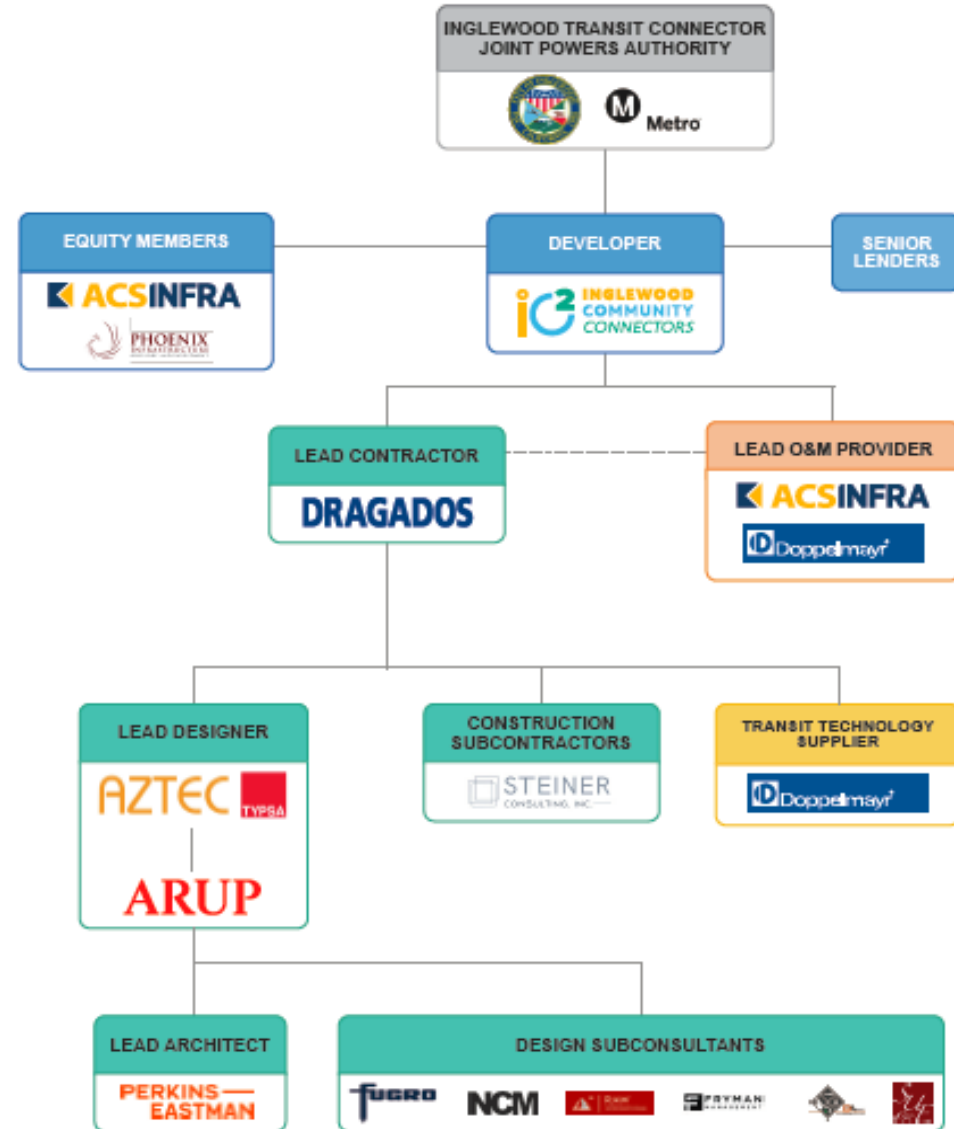
George Hanible Dragados
National Contract
Compliance DBE/EEO
Officer

Arinda Cale Dragados
Estimating Compliance
Manager



Meet Our Team

IC² Team Structure



Public Private Partnerships

How is a P3 different from a Design/Build or Bid/Build?

Why use the P3 model?

How long have P3's been around?

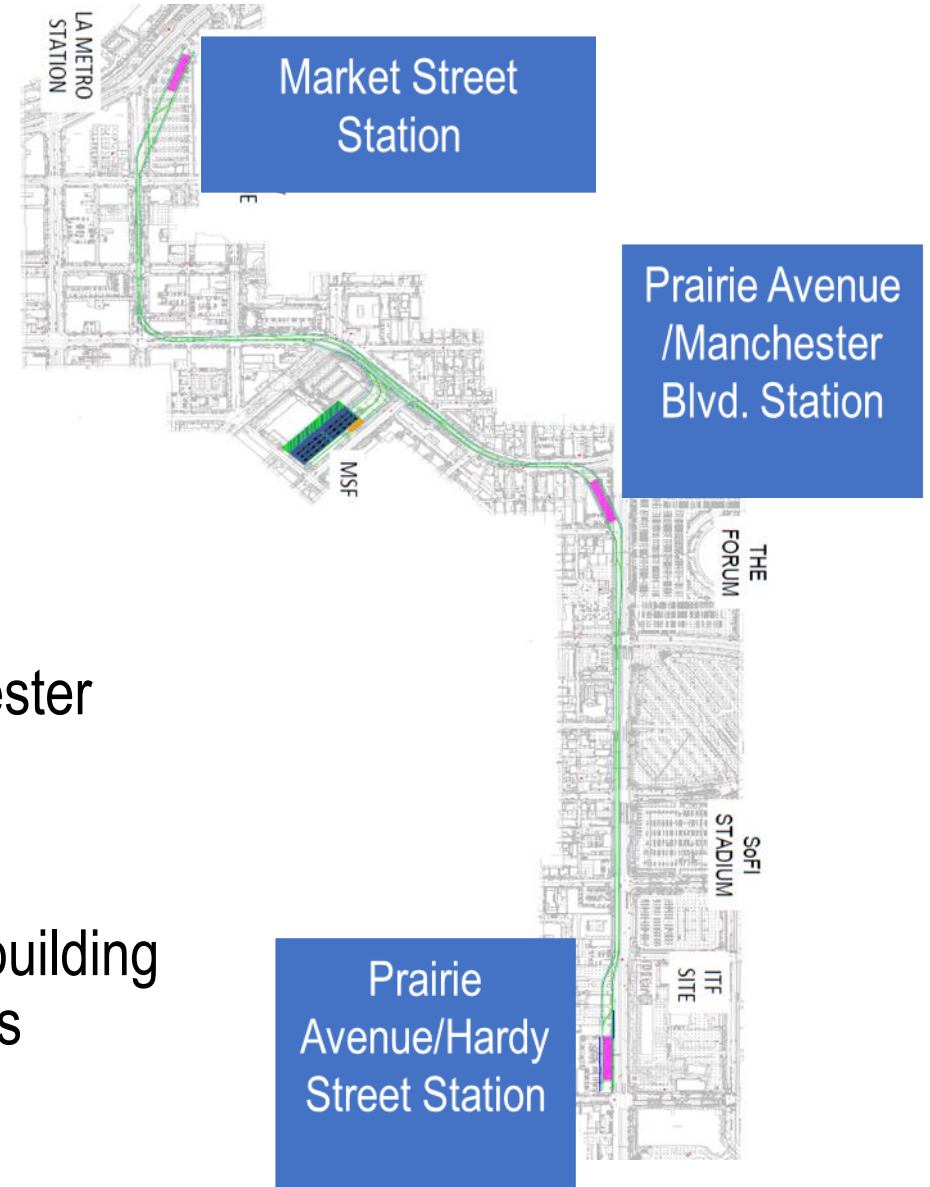
What is a Public Private Partnership?
P3?
PPP?



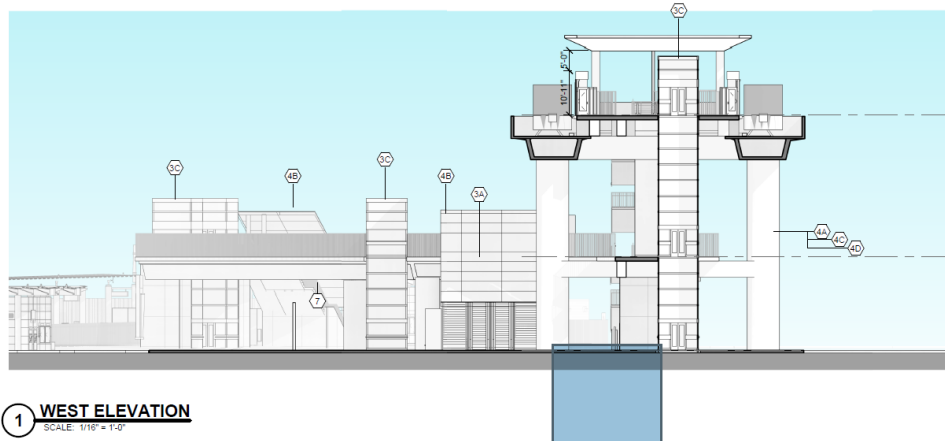
Project Overview

Project Description

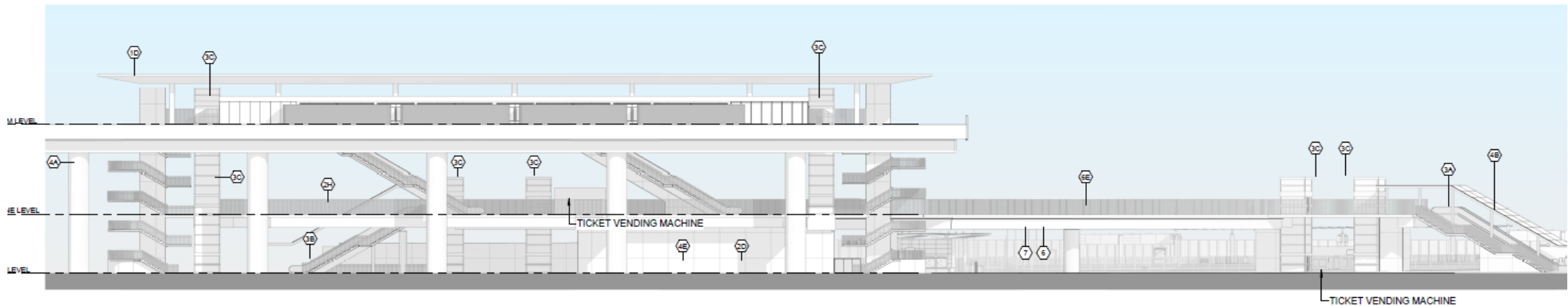
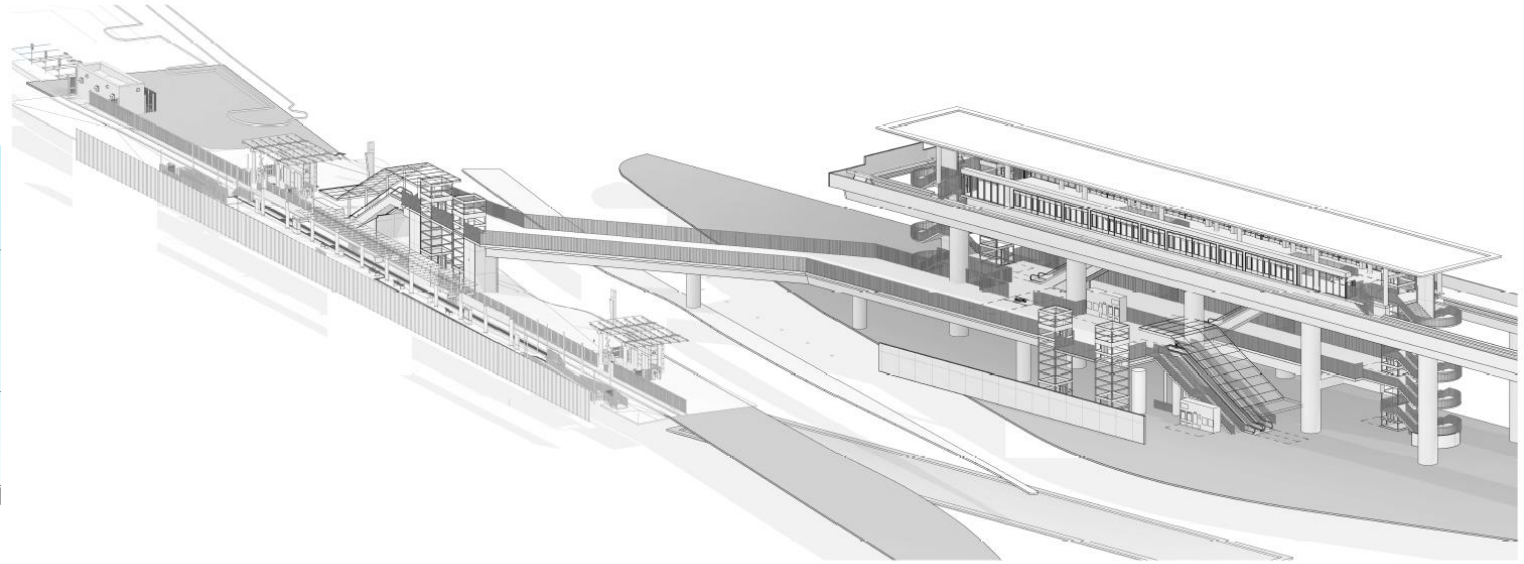
- 1.6-mile fully elevated Automated Transit System (ATS)
- Three stations:
 - Market Street/Florence Avenue
 - Prairie Avenue/Manchester Boulevard
 - Prairie Avenue/Hardy Street
- Maintenance and Storage Facility (MSF) along Manchester Boulevard (Vons Market)
- Two Traction Power Substations (TPSS)
- Three new parking lots along Project alignment route, building demolition, roadway modifications, site work and utilities



Market Street Station

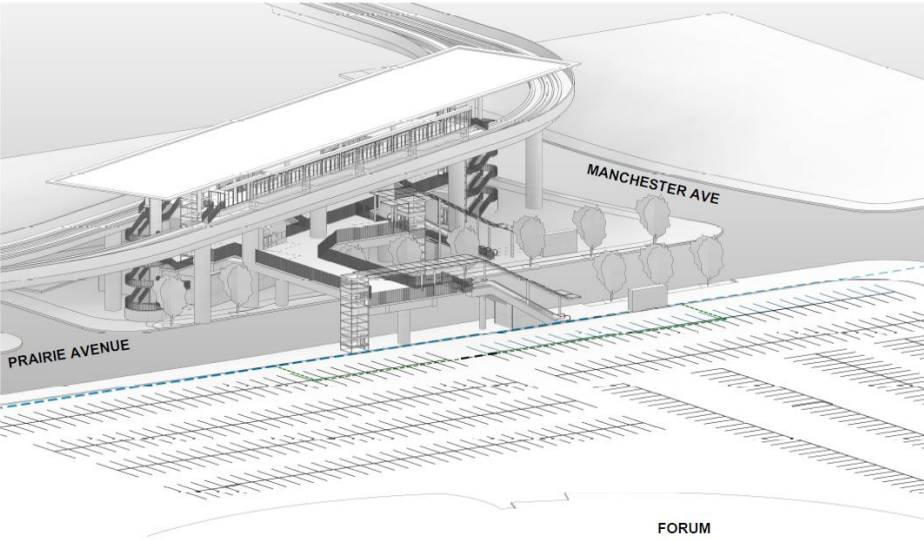


1 WEST ELEVATION
SCALE: 1/16" = 1'-0"

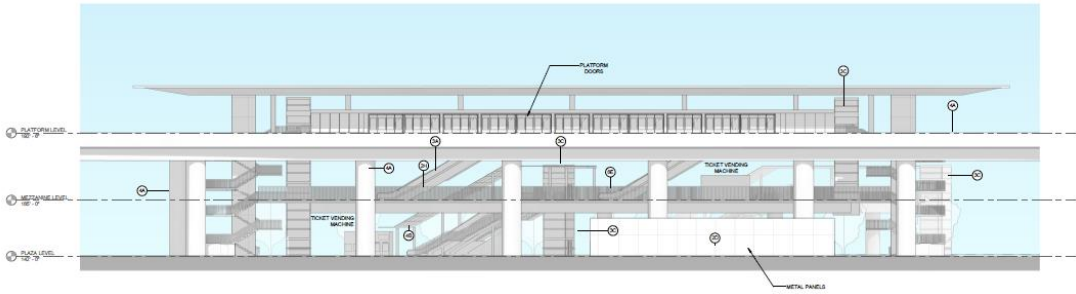
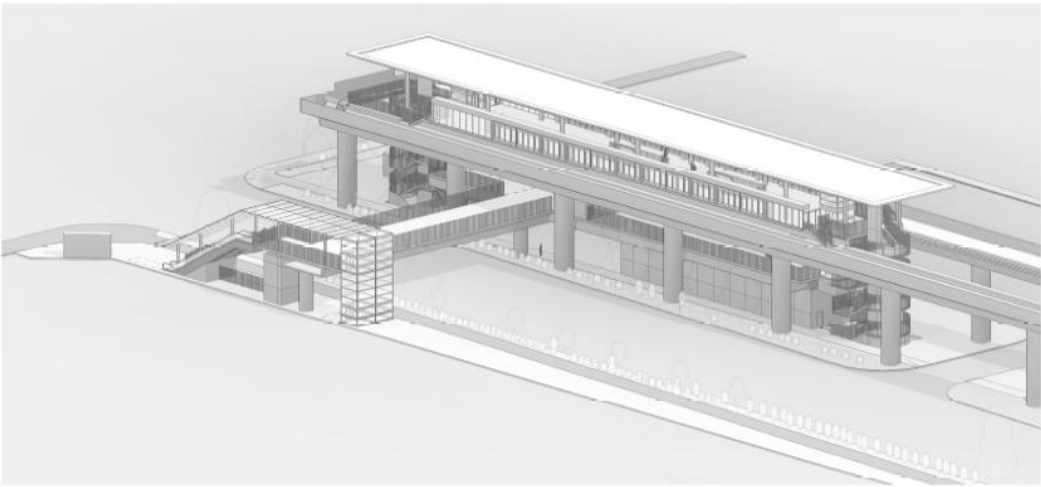


2 SOUTH ELEVATION
SCALE: 3/64" = 1'-0"

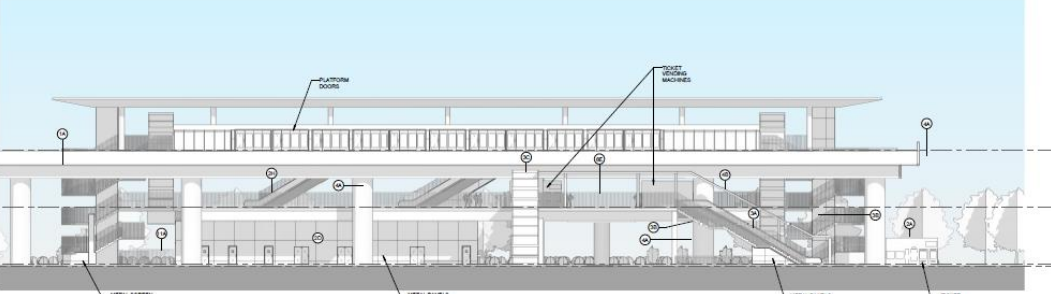
Prairie/Manchester Street Station



Prairie/Hardy Street Station

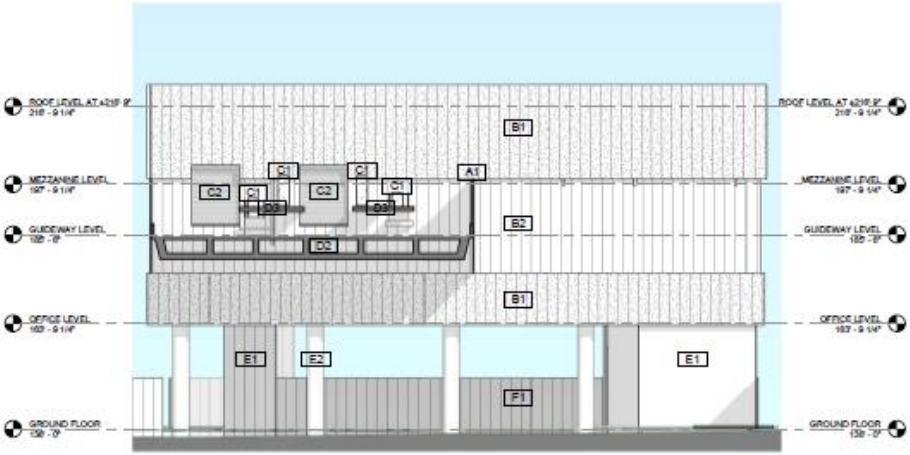
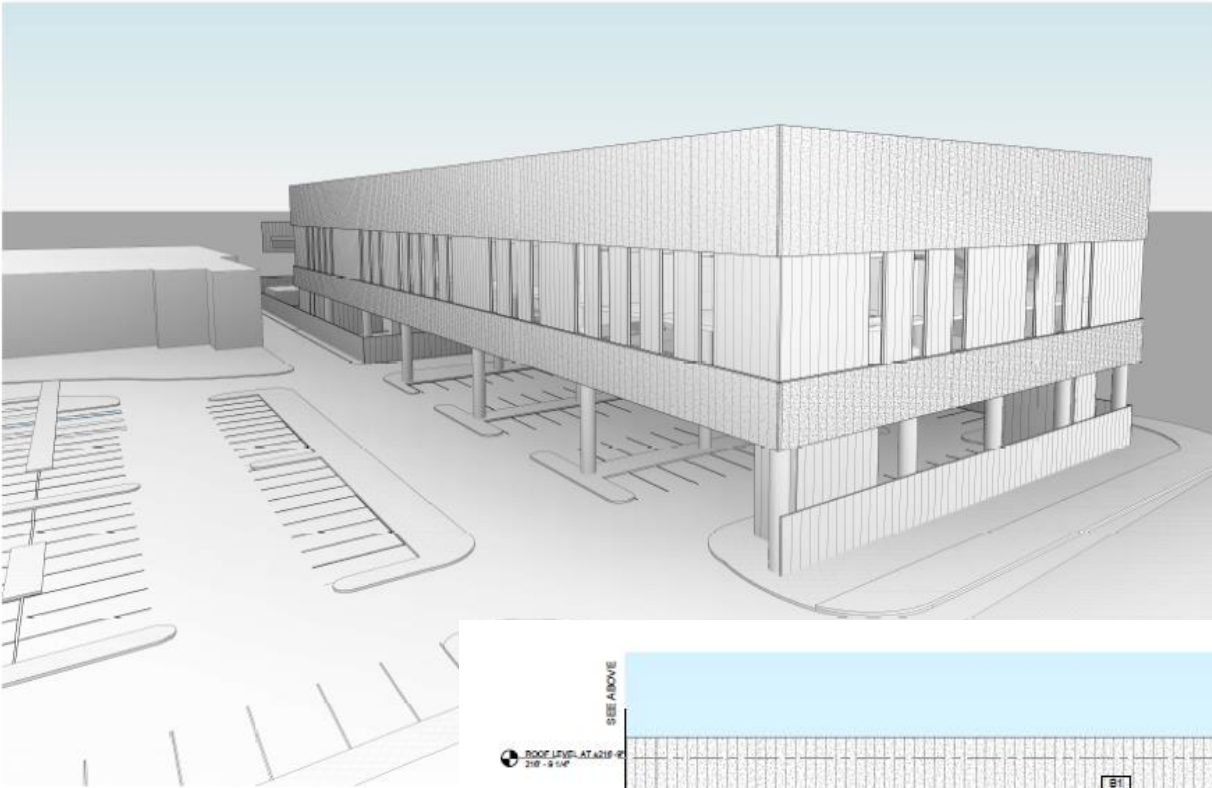


2 WEST ELEVATION
SCALE: 1/8" = 1'-0"

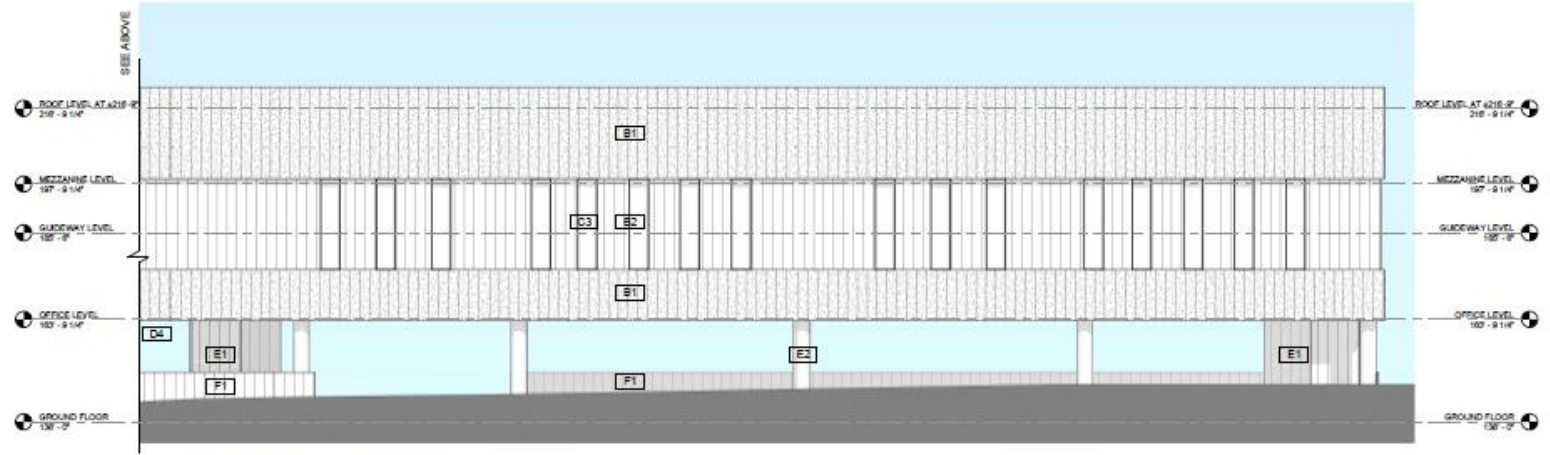


1 WEST ELEVATION
SCALE: 1/8" = 1'-0"

Maintenance and Storage Facility (MSF)



1 BUILDING ELEVATION - NORTH
SCALE: 1/8" = 1'-0"



2 BUILDING ELEVATION - WEST 2
SCALE: 1/8" = 1'-0"

O&M Scope

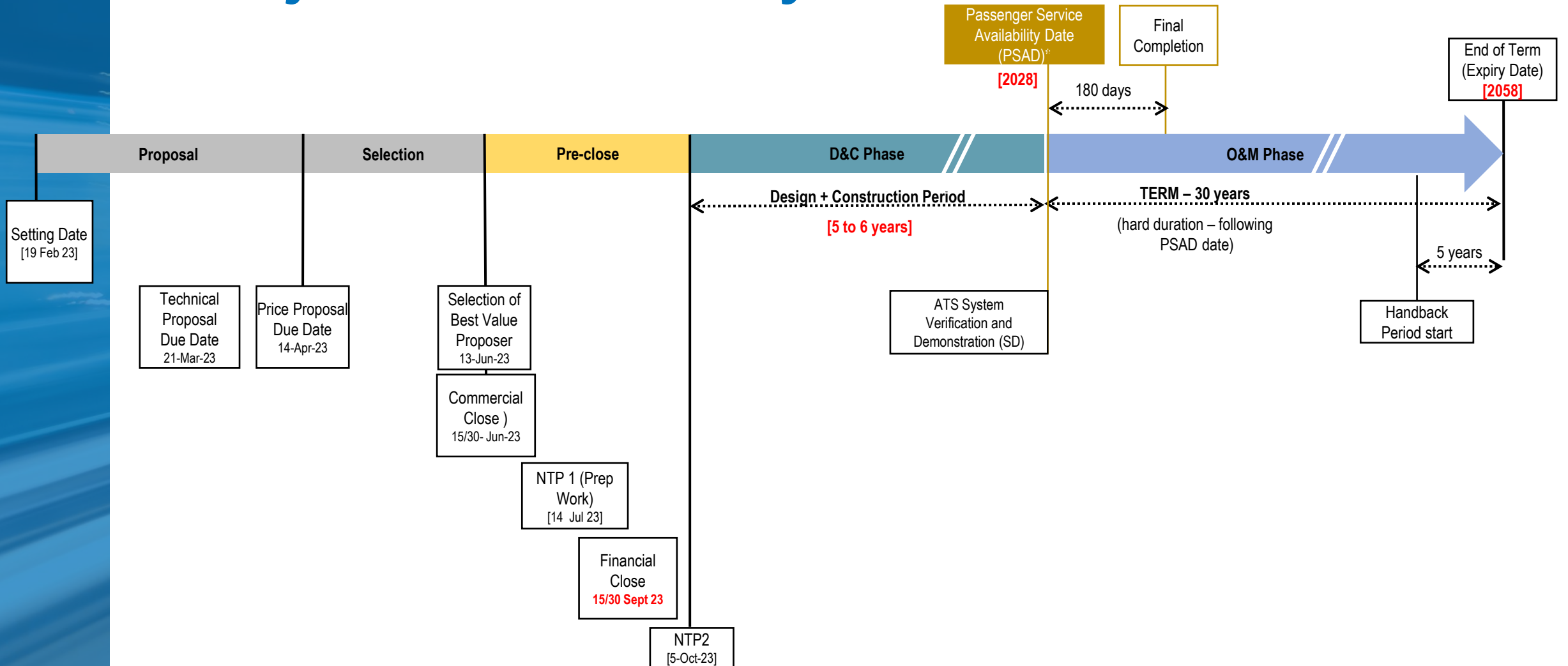
Developer's Scope Summary

- Developer shall be responsible for the operations and maintenance (O&M) of the Automated Transit System (ATS) System for the O&M Period
 - O&M Period – 30 years from PSAD
- ATS System means the ATS Operating System, the ATS Fixed Facilities, and all ancillary equipment and spare parts that together comprise the fully integrated ATS.
- O&M Work means Operations Work, Maintenance Work and Technology Enhancements, but excludes D&C Work.
 - Maintenance Work includes Renewal Work and Handback Renewal Work
 - Safety, Security (Vandalism, Graffiti), Environmental, Quality
 - Cleaning, Landscaping
 - Automated Vehicle Wash
- Developer responsible for repair of damage or destruction from vandalism, including tagging, only of the ATS Fixed Facilities located within the areas controlled by faregates.

Notable exclusions (retained by owner)

- Owner will design, procure, install, test, commission and provide operations and maintenance for all Automated Fare Collection (AFC) system equipment and systems.
- Fare enforcement

Project Term and Key Milestones



ESTIMATED PROJECT TIMELINE

Final RFP Release	12/22/2022
Design/Construction Bid Packages Available	Jan/Feb 2023
Technical Proposal Due Date	March 21, 2023
Financial Proposal Due Date	April 14, 2023
Contract Award	June 2023
Design/Construction Phase	2023 – 2028
O&M Phase	2028 – 2058



DBE Participation

DBE PARTICIPATION

Measured Goals for DBE

Awaiting Equity, Diversity & Inclusion Goals/Requirements



COMMUNITY WORKFORCE AGREEMENT

35% Local Hire Goal

City of Inglewood

10 mile Radius of City Hall

Los Angeles County

10% Transitional Worker Goal



ANTICIPATED DESIGN SCOPES

- Architecture
- Acoustic
- BIM/CADD
- Civil/Drainage/Maintenance of Traffic
- Electrical/ Communications/Fire Alarm
- Environmental Permitting
- Geotechnical Exploration and Design
- HazMat Remediation Design
- Landscape Architecture
- Lighting Design
- Mechanical/Plumbing/HVAC/Fire Protection
- Signage & Wayfinding
- Structural – Bridge
- Structural – Facilities
- Sustainability
- Topographic Survey/ROW Mapping
- Traffic Analysis
- SUE and Utility Design
- Vertical Transportation



ANTICIPATED CONSTRUCTION SCOPES FOR:

- 1.6-mile long dual-lane **Guideway Structure System**
- **Stations(3)** @ Market Street, Prairie/Manchester & Prairie/Hardy
- **Maintenance and Storage Facility (MSF)**
- **Sitework** along the Automated Transit System Alignment
- **Vehicle Manufacturing Support** to Doppelmayr

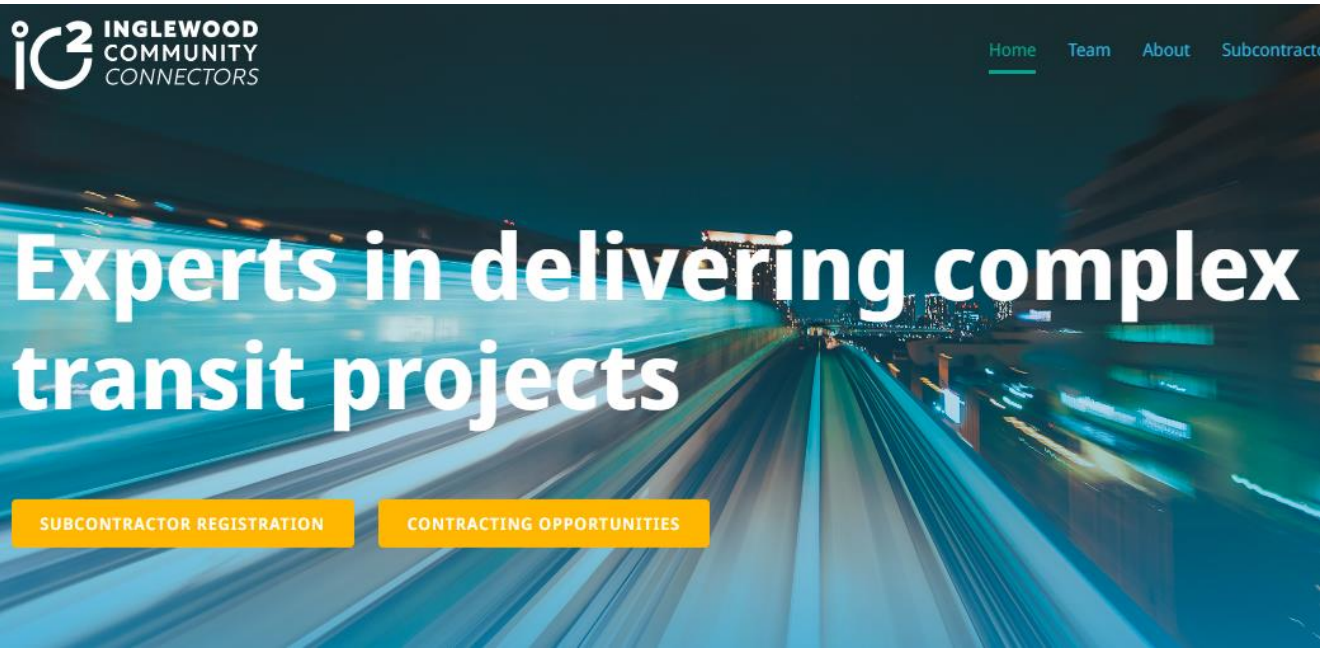


ANTICIPATED O&M SCOPES

- Structural Inspections
- IT services
- Landscaping
- Pest control
- Security services
- Cleaning Services
- Re-paint structures
- AC maintenance
- Electrical Maintenance
- Building Maintenance (Mechanical, Electrical, Plumbing, Roofing)
- Building Maintenance Supplies
- Fire Suppression System Maintenance
- Radio System Maintenance and Repair
- Shop Tools and Commercial Spare Parts Supply
- Fleet Maintenance



Website Registration



Website Registration

- Bid Package Notifications
- Presentations Posted
- Upcoming Outreach's
- One-on-One Meetings
- Inglewood Website Link



Q&A